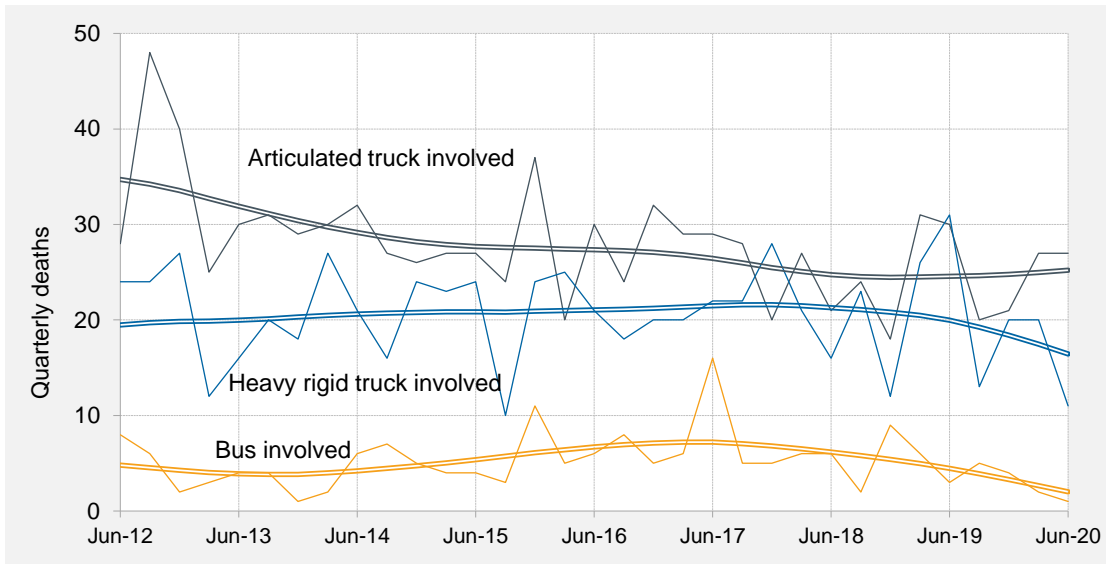




Quarterly counts of deaths in crashes involving heavy vehicles, Australia, with trends



Key features

- During the 12 months to the end of June 2020, 157 people died in crashes involving heavy trucks. These included 95 deaths in crashes involving articulated trucks and 64 deaths in crashes involving heavy rigid trucks.
- Fatalities in crashes involving heavy trucks:
 - decreased by 17.8 per cent when compared with the corresponding 12-month period one year earlier;
 - decreased by an average of 3.9 per cent per year over the three years to June 2020.
- Fatalities in crashes involving articulated trucks:
 - decreased by 7.8 per cent when compared with the corresponding period one year earlier;
 - decreased by an average of 4.7 per cent per year over the three years to June 2020.
- Fatalities in crashes involving heavy rigid trucks:
 - decreased by 30.4 per cent compared with the corresponding period one year earlier;
 - decreased by an average of 6.0 per cent per year over the three years to June 2020.
- During the 12 months to June 2020, 12 people died in crashes involving buses.
- Counts of fatalities in crashes involving buses:
 - decreased by 40.0 per cent compared with the corresponding 12-month period one year earlier;
 - decreased by an average of 28.2 per cent per year over the three years to June 2020.

ANNUAL TRENDS

Table 1 Deaths

	<i>Articulated Truck involved</i>	<i>Heavy Rigid Truck involved</i>	<i>Any heavy truck involved</i>	<i>Bus involved</i>	<i>All road crash deaths^a</i>
12 Months ended					
<i>June 2011</i>	151	62	202	25	1,295
<i>June 2012</i>	126	81	202	23	1,276
<i>June 2013</i>	143	79	219	15	1,263
<i>June 2014</i>	122	86	204	13	1,155
<i>June 2015</i>	107	87	192	20	1,170
<i>June 2016</i>	111	80	186	25	1,259
<i>June 2017</i>	114	80	185	35	1,223
<i>June 2018</i>	96	87	173	22	1,213
<i>June 2019</i>	103	92	191	20	1,196
<i>June 2020</i>	95	64	157	12	1,109
<i>Change last 12 months (%)</i>	-7.8	-30.4	-17.8	-40.0	-7.3
<i>Ave. trend change p.a.(%)</i>					
<i>- for last 10 years</i>	-4.6	0.8	-2.5	-1.5	-1.1
<i>- for last 3 years</i>	-4.7	-6.0	-3.9	-28.2	-3.0

Table 2 Fatal crashes

	<i>Articulated Truck involved</i>	<i>Heavy Rigid Truck involved</i>	<i>Any heavy truck involved</i>	<i>Bus involved</i>	<i>All road crash deaths^a</i>
12 Months ended					
<i>June 2011</i>	129	58	176	24	1,190
<i>June 2012</i>	114	68	177	23	1,163
<i>June 2013</i>	113	71	181	13	1,150
<i>June 2014</i>	111	75	182	13	1,068
<i>June 2015</i>	90	77	165	16	1,060
<i>June 2016</i>	96	69	162	22	1,157
<i>June 2017</i>	99	77	169	30	1,142
<i>June 2018</i>	88	79	158	21	1,124
<i>June 2019</i>	92	80	169	17	1,103
<i>June 2020</i>	82	60	140	11	1,015
<i>Change last 12 months (%)</i>	-10.9	-25.0	-17.2	-35.3	-8.0
<i>Ave. trend change p.a.(%)</i>					
<i>- for last 10 years</i>	-4.2	1.2	-2.0	-2.3	-1.0
<i>- for last 3 years</i>	-5.1	-7.1	-4.9	-27.5	-3.7

a All deaths, whether or not crash involved a heavy vehicle

ARTICULATED TRUCK INVOLVEMENT

Table 3 Quarterly counts of deaths in crashes involving articulated trucks

	NSW	Vic	Qld	SA	WA	Tas	NT	ACT	Australia
Quarter ended									
Sep-17	14	6	5	2	1	0	0	0	28
Dec-17	6	4	3	1	5	1	0	0	20
Mar-18	10	3	8	3	2	1	0	0	27
Jun-18	6	4	6	1	3	1	0	0	21
Sep-18	6	3	9	0	4	0	2	0	24
Dec-18	4	4	6	2	2	0	0	0	18
Mar-19	8	9	4	7	2	1	0	0	31
Jun-19	6	5	5	7	6	1	0	0	30
Sep-19	6	2	7	2	1	1	0	1	20
Dec-19	3	6	2	7	2	1	0	0	21
Mar-20	8	10	6	1	1	1	0	0	27
Jun-20	11	5	9	1	0	1	0	0	27

Figure 1 Quarterly counts of deaths in crashes involving articulated trucks, with trend

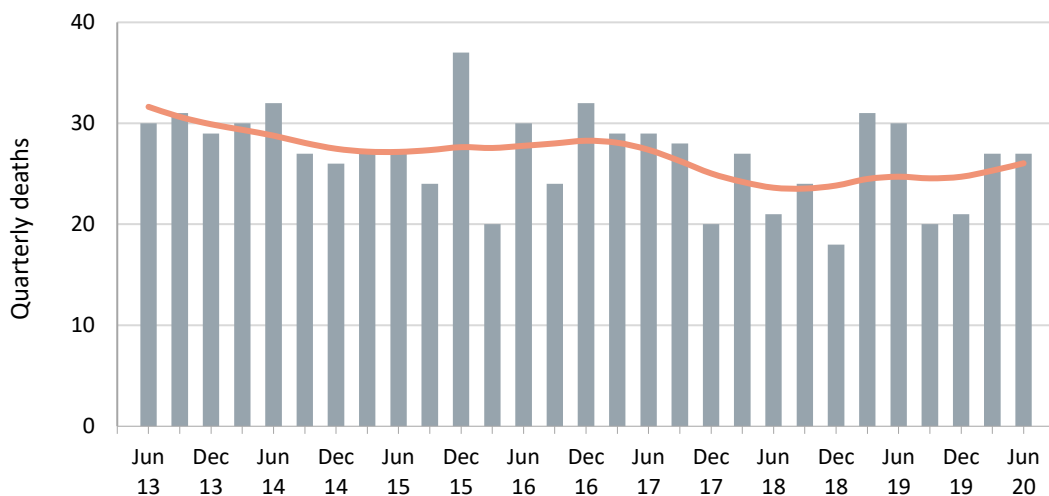


Table 4 Annual counts of deaths in crashes involving articulated trucks

	NSW	Vic	Qld	SA	WA	Tas	NT	ACT	Australia
12 Months ended									
June 2016	30	16	27	15	13	8	1	1	111
June 2017	42	24	24	7	11	1	4	1	114
June 2018	36	17	22	7	11	3	0	0	96
June 2019	24	21	24	16	14	2	2	0	103
June 2020	28	23	24	11	4	4	0	1	95
Change last 12 months (%)	16.7	9.5	0.0	-31.3	-71.4	100.0	-100.0	-	-7.8
Average annual % change over 3 years ^a	-15.0	0.8	0.9	24.4	-24.4	45.5	-	-	-4.7

a Average annual percentage change based on the exponential trend for the last four 12-month periods.

HEAVY RIGID TRUCK INVOLVEMENT

Table 5 Quarterly counts of deaths in crashes involving heavy rigid trucks

	NSW	Vic	Qld	SA	WA	Tas	NT	ACT	Australia
Quarter ended									
Sep-17	11	5	2	1	3	0	0	0	22
Dec-17	7	8	1	2	7	3	0	0	28
Mar-18	10	2	6	1	1	1	0	0	21
Jun-18	5	4	4	2	1	0	0	0	16
Sep-18	9	2	7	1	2	1	0	1	23
Dec-18	5	2	3	1	1	0	0	0	12
Mar-19	12	6	5	1	1	1	0	0	26
Jun-19	14	9	4	0	4	0	0	0	31
Sep-19	2	3	3	2	2	0	1	0	13
Dec-19	7	6	4	2	1	0	0	0	20
Mar-20	12	3	3	0	2	0	0	0	20
Jun-20	4	2	3	0	2	0	0	0	11

Figure 2 Quarterly counts of deaths in crashes involving heavy rigid trucks, with trend

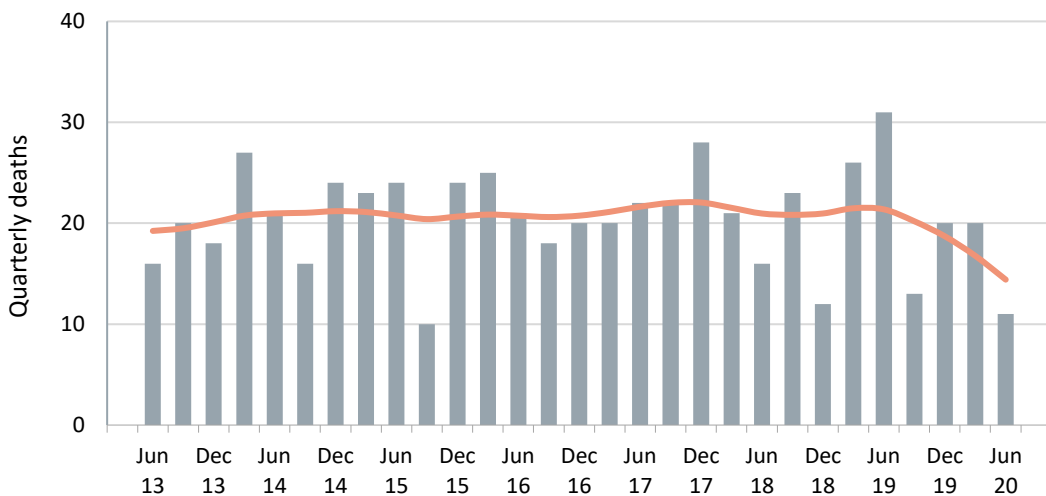


Table 6 Annual counts of deaths in crashes involving heavy rigid trucks

	NSW	Vic	Qld	SA	WA	Tas	NT	ACT	Australia
12 Months ended									
June 2016	30	18	14	5	9	4	0	0	80
June 2017	31	16	15	4	12	2	0	0	80
June 2018	33	19	13	6	12	4	0	0	87
June 2019	40	19	19	3	8	2	0	1	92
June 2020	25	14	13	4	7	0	1	0	64
Change last 12 months (%)	-37.5	-26.3	-31.6	33.3	-12.5	-100.0	-	-100.0	-30.4
Average annual % change over 3 years^a	-4.4	-3.9	-0.5	-6.7	-18.3	-	-	-	-6.0

a Average annual percentage change based on the exponential trend for the last four 12-month periods.

BUS INVOLVEMENT

Table 7 Quarterly counts of deaths in crashes involving buses

	NSW	Vic	Qld	SA	WA	Tas	NT	ACT	Australia
Quarter ended									
Sep-17	0	3	1	0	1	0	0	0	5
Dec-17	0	3	0	0	1	0	1	0	5
Mar-18	3	1	1	0	1	0	0	0	6
Jun-18	2	2	2	0	0	0	0	0	6
Sep-18	1	1	0	0	0	0	0	0	2
Dec-18	1	1	2	0	3	1	0	1	9
Mar-19	4	0	0	2	0	0	0	0	6
Jun-19	1	2	0	0	0	0	0	0	3
Sep-19	2	0	0	0	3	0	0	0	5
Dec-19	3	1	0	0	0	0	0	0	4
Mar-20	0	0	0	1	0	1	0	0	2
Jun-20	1	0	0	0	0	0	0	0	1

Figure 3 Quarterly counts of deaths in crashes involving buses, with trend

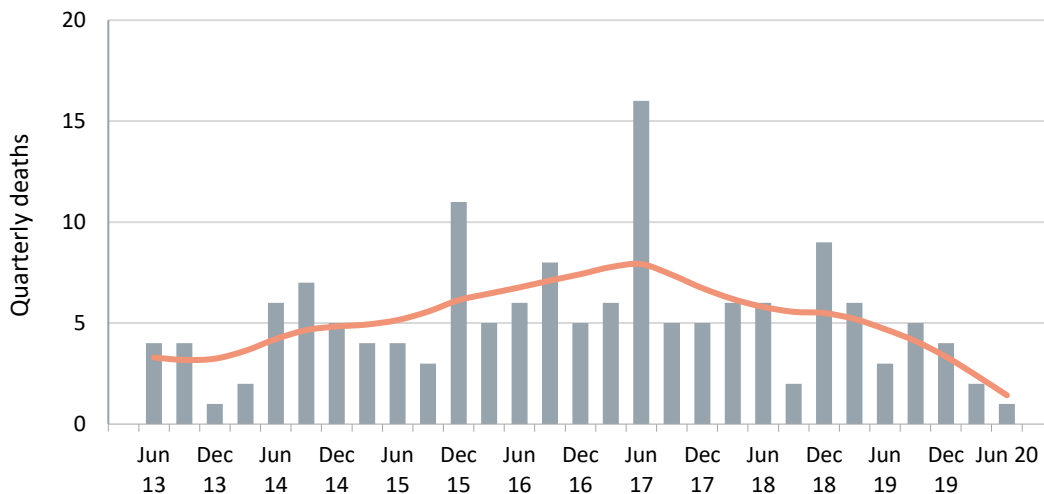


Table 8 Annual counts of deaths in crashes involving buses

	NSW	Vic	Qld	SA	WA	Tas	NT	ACT	Australia
12 Months ended									
June 2016	6	7	4	1	3	1	3	0	25
June 2017	11	5	10	2	2	2	3	0	35
June 2018	5	9	4	0	3	0	1	0	22
June 2019	7	4	2	2	3	1	0	1	20
June 2020	6	1	0	1	3	1	0	0	12
Change last 12 months (%)	-14.3	-75.0	-100.0	-50.0	0.0	0.0	-	-100.0	-40.0
Average annual % change over 3 years^a	-13.8	-43.1	-	-	12.9	-	-	-	-28.2

a Average annual percentage change based on the exponential trend for the last four 12-month periods.

APPENDIX

Glossary Note. The following definitions are general explanations only. The precise definitions vary across the organisations that provide the source data. These differences may result in minor inconsistencies between jurisdictions for some variables.

Articulated truck A motor vehicle primarily for load carrying, consisting of a prime mover that has no significant load carrying area but with a turntable device which can be linked to one or more trailers.

Heavy rigid truck A motor vehicle of GVM greater than 4.5 tonnes constructed with a load carrying area. Includes a rigid truck with a tow bar, draw bar or other non-articulated coupling on the rear of the vehicle.

Gross Vehicle Mass (GVM) Tare weight (i.e. unladen weight) of the motor vehicle plus its maximum carrying capacity excluding trailers.

Bus A motor vehicle constructed for the carriage of passengers which has at least 10 seats, including the driver's seat.

Crash Any apparently unpremeditated event reported to police, or other relevant authority, and resulting in death, injury or property damage attributable to the movement of a road vehicle on a public road.

Road Death or Fatality A person who dies within 30 days of a crash as a result of injuries received in that crash.

Fatal crash A crash for which there is at least one death.

Preliminary data Data for recent months are preliminary and subject to revision.

Estimation of three year trends In this bulletin, the figures for the 'Average annual per cent change over 3 years' are calculated by fitting an exponential trend line to the last four data points (years 0 to 3). The Excel function LOGEST performs the fit. The resulting trend line represents a constant annual percent change over the period. (Note: when fitted to a series containing small numbers, this may not be a reliable indicator of a stable trend.)

Smooth trend lines Whittaker-Henderson smoothers with values for the smoothing parameter varying between 5 and 100. The application R (package pracma) is used.

Data Sources The data presented here are obtained from the following sources:

- Transport for New South Wales;
- Department of Transport, Victoria;
- Queensland Department of Transport and Main Roads;
- Department of Planning, Transport and Infrastructure South Australia;
- Western Australian Police;
- Department of State Growth, Tasmania;
- Department of Transport, Northern Territory;
- Transport Canberra and City Services Directorate, Australian Capital Territory;

An online version of the database used to produce this bulletin is available from:

< http://www.bitre.gov.au/statistics/safety/fatal_road_crash_database.aspx >

Inquiries For further information about data in this bulletin, contact:

Bureau of Infrastructure and Transport Research Economics
Department of Infrastructure, Transport, Regional Development and Communications
GPO Box 501 Canberra ACT 2601
Email: roadsafety@infrastructure.gov.au
Internet: < <http://www.bitre.gov.au> >