

# PBS and HPFV Update

Tuesday 4 April 2023



Department  
of Transport  
and Planning

**Ben Atkinson**

Leader Heavy Vehicle Productivity

Freight Victoria

Department of Transport and Planning

## What's new?



New networks published



More KM's of Gazetted roads



Better informed projects - less disruptions



Updated OBM requirements



New policy updates



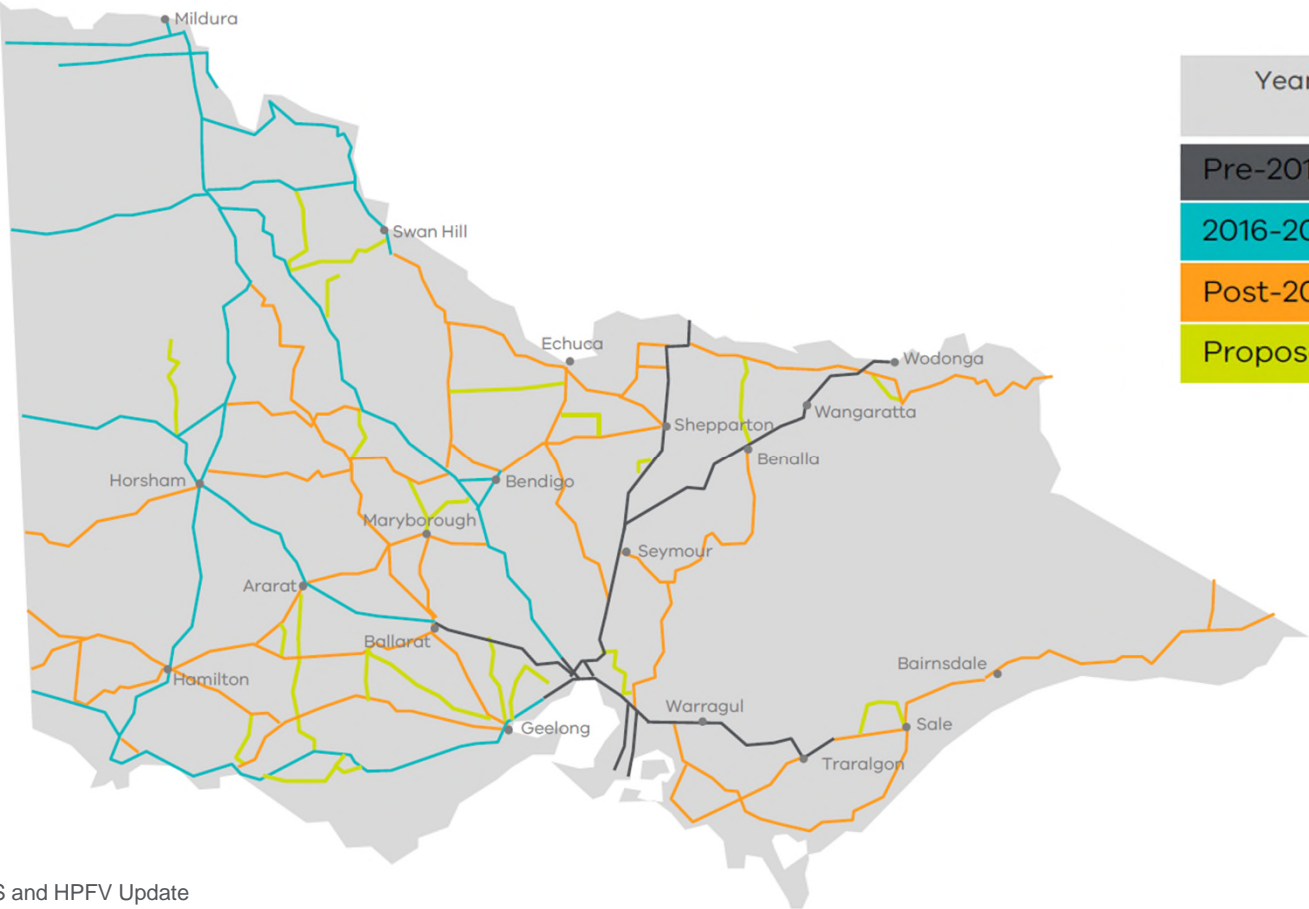
# Recently Published Networks



## PBS Level 3

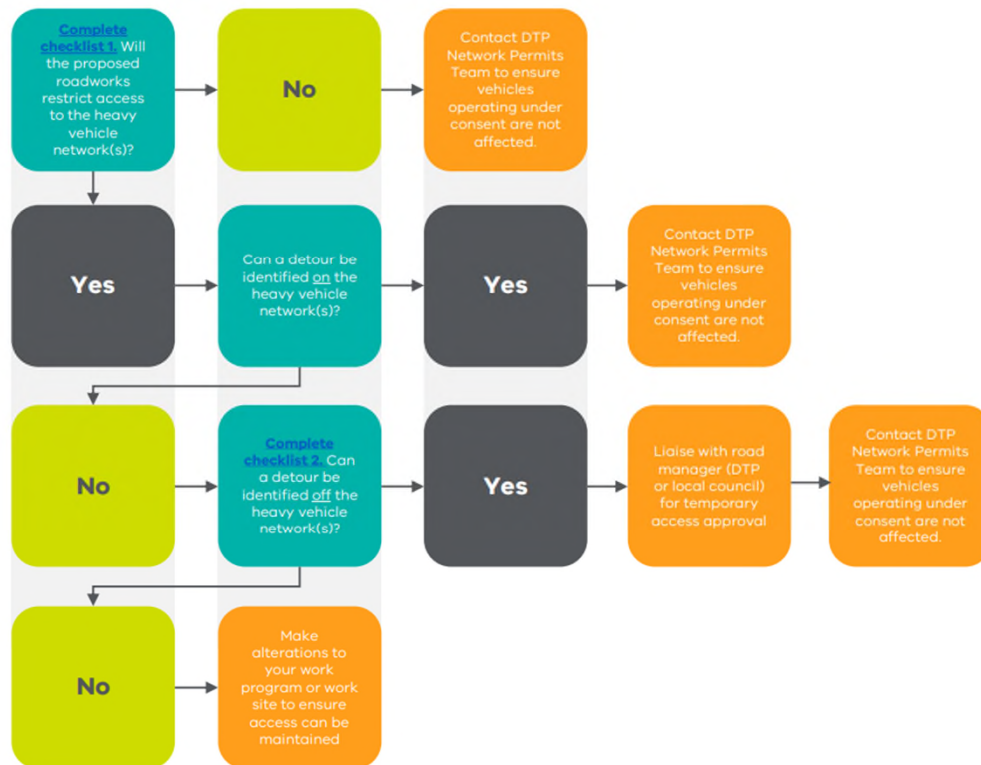
PBS Level 3A Mass - Quad-Tri & Quad-Quad B-Double	+
PBS Level 3A Mass - General Freight	+
PBS Level 3A Mass - Volumetric	+
PBS Level 3A - A-Double (up to 36.5m)	+
PBS Level 3A B-Triple General Freight (up to 36.5m)	+
PBS Level 3A B-Triple Volumetric (up to 36.5m)	+
PBS Level 3A General Freight – AB-Triple (up to 36.5m)	+
PBS Level 3A Volumetric – AB-Triple (up to 36.5m)	+

# PBS (HPFV) uptake over the years



Year	Structures added	Cumulative number
Pre-2016	800	800
2016-2019	900	1700
Post-2019	1300	3000
Proposed	260-270	3260-3270

# Project advice for detours



**Checklist 1 - Roadwork detours**

This checklist is to assist any roadworks project team to determine the impacts on heavy vehicle activity. You will need to use this checklist in conjunction with the 'Maintaining Heavy vehicle access during roadworks' flowchart information sheet.

This checklist will ask a series of questions to determine which vehicles are likely to be impacted by your works. You will then be required to respond to questions about the impacts to a range of heavy vehicles relevant to your works.

We recommend saving a copy of your responses once you have completed this checklist as this will assist in identifying the vehicles which require attention in your next steps (please see the 'Heavy vehicle access during roadworks' flowchart information sheet to understand what the relevant next step is for your works).

While we strongly encourage the use of this checklist and associated processes to determine the potential impacts of your roadworks for heavy vehicles, it is not compulsory but rather exists as an advisory resource to assist your team.

Please note this checklist is not actively monitored. If you require further assistance, please contact [heavyvehicles@transport.vic.gov.au](mailto:heavyvehicles@transport.vic.gov.au)

\* Required

1. What date will the detours commence? \*

Please input date (dd/MM/yyyy)

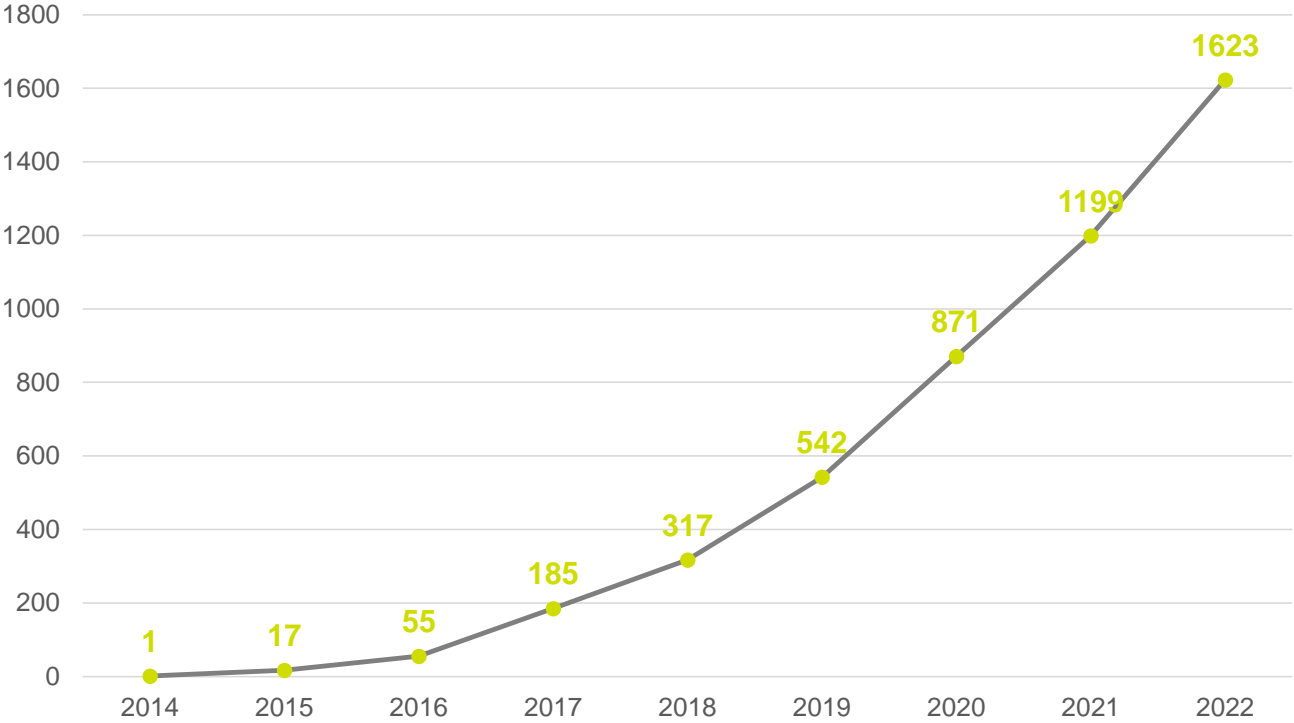
2. What date will the detours conclude? \*

Please input date (dd/MM/yyyy)

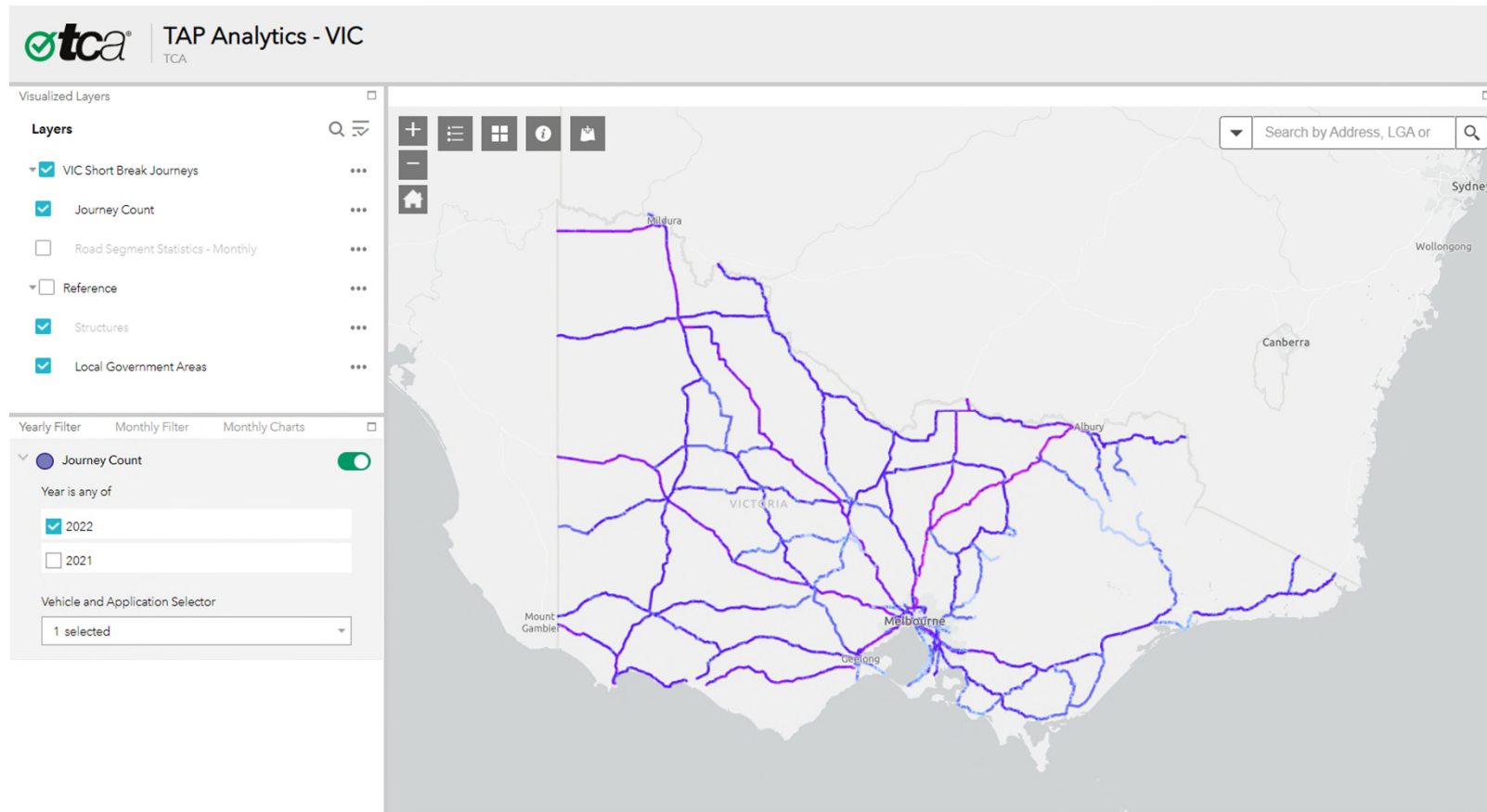


## PBS and HPFV Update

# PBS (HPFV) uptake over the years



# Telematics = Informed Decision Making





## Upcoming Networks



Reference Vehicle	Prime Mover (steer to drive) Spacing	Drive Group Inner Spacing	Front Trailer Spacing	Drawbar Spacing	Rear Trailer Spacing	Tri-Axle Group Inner Spacings
<b>Reference Vehicle 1</b>	>3000	1250-1400	>5200	>4000	>5200	1200-1550
<b>Reference Vehicle 2</b>	>3000	1250-1400	>6000	>2500	>6200	1200-1550
<b>Reference Vehicle 3</b>	>3000	1250-1400	>5200	>4550	>4700	1200-1550
<b>Reference Vehicle 4</b>	>3000	1250-1400	>5100	>4200	>4200	1200-1550
<b>Reference Vehicle 5</b>	>3000	1250-1400	>4200	>4200	>4200	1200-1550

# Policy Updates



## On-Board Mass (OBM)

- Final date to have OBM fitted and operational is 30 June 2023
- Operators unable to meet the 30 June deadline must operate at 68.5t



## TMA / IAP

- IAP unable to integrate with OBM
- TMA must be fitted for vehicles heavier than 68.5t (46t for quad-semis)



## Tri-axle dolly

- Previously capped at tandem dolly mass (17t)
- Now assessed at full HML (22.5t)
- 36.5m existing tri-dolly A-doubles yet to be assessed



## Breakdowns

- Policy introduced to cater for HPFV combinations where the Prime mover has broken down
- Provides a number of exemptions





Close